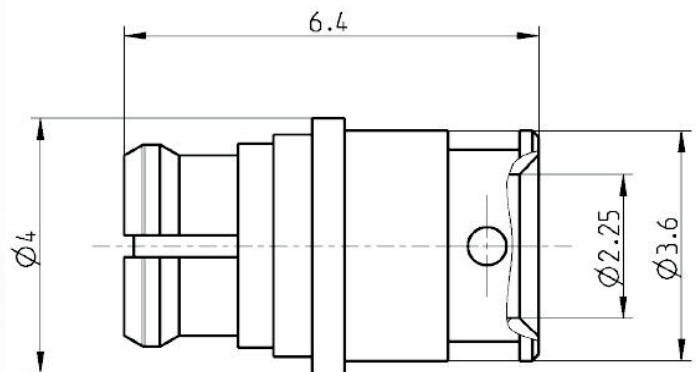


INFORMATION | ARTICLE NUMBER: 16985 | CABLE TYPE: SEMIRIGID

SMP-21085-011 (straight jack)



All dimensions are in mm



ROHS & REACH CONFORM

MATERIAL AND FINISH

| | |
|----------------|--|
| CENTER CONTACT | BERYLLIUM COPPER, AURODUR, GOLD PLATED |
| OUTER CONTACT | BERYLLIUM COPPER OR EQUIVALENT, AURODUR, GOLD PLATED |
| DIELECTRIC | PTFE |

For more information about the products, please scan the code and get the information from our website.



el-spec GmbH
Lauterbachstr. 23c
82538 Geretsried

Tel: 08171/4357-23
sales@elspecgroup.de
www.elspecgroup.de

INFORMATION | ARTICLE NUMBER: 16985 | CABLE TYPE: SEMIRIGID

ELECTRICAL CHARACTERISTICS

| | |
|---------------------------|--|
| IMPEDANCE | 50Ω |
| FREQUENCY RANGE | DC to 26.5 GHz |
| RETURN LOSS | ≥ 30 dB @ DC to 4 GHz ≥ 23 dB @ 4 to 12 GHz ≥ 20 dB @ 12 to 18 GHz |
| INSERTION LOSS | ≤ 0.01 x √f (GHz) dB, DC to 18 GHz |
| INSULATION RESISTANCE | ≥ 5 GΩ |
| CENTER CONTACT RESISTANCE | ≤ 6.0 mΩ |
| OUTER CONTACT RESISTANCE | ≤ 2.0 mΩ |
| TEST VOLTAGE | 500 V RMS |
| WORKING VOLTAGE | 335 V rms |
| CONTACT CURRENT | 1.2A DC MAX. |
| WEIGHT | 0.3 g/pce |

MECHANICAL CHARACTERISTICS

| | smooth bore | limited detent | full detent |
|----------------------------------|-------------|----------------|-------------|
| MATING CYCLES IF MATING PART IS: | ≥ 1000 | ≥ 500 | ≥ 100 |
| ENGAGEMENT FORCE | 9 N max. | 45 N max. | 68 N max. |
| DISENGAGEMENT FORCE | 2.2 N min. | 9 N min. | 22 N min. |
| CENTER CONTACT CAPTIVATION | ≥ 7 N | | |

ENVIROMENTAL CHARACTERISTICS

| | |
|---------------------|---------------------------------|
| TEMPERATURE RANGE | -65°C TO +155°C |
| THERMAL SHOCK | MIL-STD-202, METH. 107, COND. B |
| VIBRATION | MIL-STD-202, METH. 204, COND. B |
| SHOCK | MIL-STD-202, METH. 213, COND. A |
| MOISTURE RESISTANCE | MIL-STD-202, METH. 106 |

For more information about the products, please scan the code and get the information from our website.



el-spec GmbH
Lauterbachstr. 23c
82538 Geretsried

Tel: 08171/4357-23
sales@elspecgroup.de
www.elspecgroup.de